



IRONWELD

Engineering Pvt. Ltd.

An ISO 9001 : 2015 Certified



ENGINEERING THE STRUCTURE

www.ironweldengineering.com

The company is promoted by a team of highly experienced, dynamic, inspired and innovators with more than a two decade of experience, expertise and in-depth understanding in the manufacturing and quality requirement in Electro-forged technology of steel gratings.

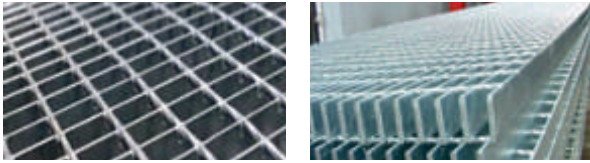
WE ARE EXPERTISE IN : Design, Engineering & Manufacturing.

- Electroforge Gratings
- Manual Gratings
- Stair Treads
- Grating Clamps
- Handrails

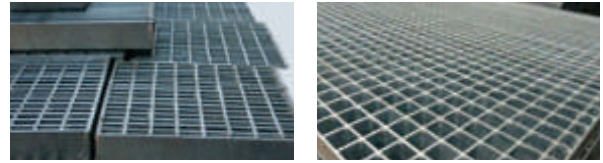
* Raw Material : Mild Steel/Stainless Steel *

“ Ironweld Engineering Pvt. Ltd.”
Established in 2019, located at Pune.

ELECTROFORGE GRATINGS



MANUAL GRATINGS : M.S. / S.S.



STAIR TREAD



GRATING CLAMPS



HANDRAILS



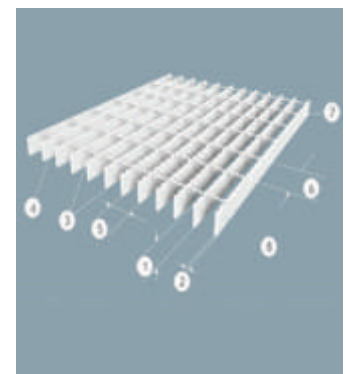
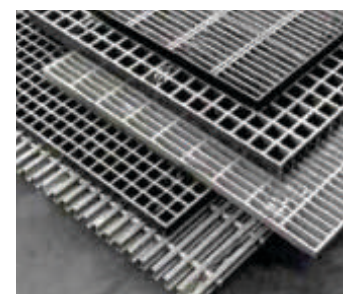
DESIGN : We design the gratings as per Application/ Support/ Load Requirement for UDL (Uniformed Distributed Load) and CL (Concentrated Load).

ENGINEERING : We are detailing the Gratings with cut/notches, openings, support, orientation and Bill of Quantity (BOQ), based on General Arrangement Drawing (GAD-Structural platform) provided by the customer. We ensure to start the production only after approval of drawing.

MANUFACTURING : Electroformed Grating panel is produce in 1 x 6 meter size. It is cut to size as per the dimensions of the Grating panel in approved drawing. Further the cut pieces are framed & fabricated according to cuts/notches/openings/span and width etc. Supervision of orientation of Gratings (span/width) is essential to ensure the load carrying member resting at support end.

HOW TO SPECIFY THE GRATINGS

No	Discription	Details of Options
1	Bearing Bar Height in mm	25, 30, 32, 40, 50 OR (any specific design)
2	Bearing Bar Thickness in mm	3, 3.5, 4, 5, 6 OR (any specific design)
3	Bearing Bar Type	Flat OR Serrated
4	Sq.Twisted Cross Bar	6mm OR 8mm
5	Bearing Bar Spacing (c/c)	30, 35, 40
6	Cross Bar Spacing (c/c)	50, 75, 100
7	Surface Finish	Self Coloured , Hot Dip Galvanised, Painted
8	Raw Material	Mild Steel, Stainless Steel



QUALITY CONTROL AND ASSURANCE

An ISO - 9001:2015 Company, we strongly maintain a Quality Management System within the Organisation, as well to ensure Quality product, we follows a Quality Assurance Plan (QAP/ITP).

Quality has been controlled & assured in each stages - INWARD / IN PROCESS / FINAL as required by Indian / International Standards.

PRODUCT TESTING



LOAD DEFLECTION TEST

Finish Grating is tested by applying a Design load uniformly or concentric on the top of the grating & deflection is measured on Dial guage. To ensure the product , the allowable deflection shall be in limit with respect to span support of the gratings.



PULL OUT TEST

The test is carried out to ensure the welding strength of the Electroforge weld intersection of bearing bar to cross bar. It is carried out on tensile test machine to break the welding joint by pulling method & measure the KN applied to break the joint. Normally more than 3 KN is a good welding strength to ensure Quality of Electroforge strength.



HOW TO SPECIFY THE CLAMPS

Clamps are specify in design profile of Top/Bottom/size & length Nut & Bolt with washer. Normally universal clamps are used to fit the Gratings, with thickness of 2mm. EIL - (Engineers India Ltd.) design a Standard Clamp size in 3 mm thickness.

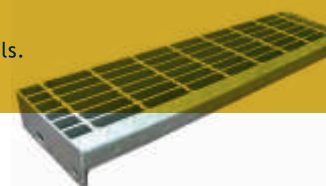
OUR MANUFACTURING SPECIALITY AND STRENGTH

Manufacturing of Circular Type Gratings for Equipment Platforms with High accuracy of dimensions to fit to site at very high altitude. Special process is developed to manufacture circular platform with high productivity and quality.



STAIR TREADS SPECIFY

- Size of the Stair Treads - length x width.
- Bearing Bar @ c/c distance.
- Cross bar @ c/c distance.
- Side Plate - Size and Hole dimensions.
- Nose Plate-Chequered Plate thickness & bending.
- Surface Finish.
- Welding Details.



Manufacturing of EIL (Engineers India Ltd.) Gratings / Clamps / Stair Treads /Catch Basin / Drainage cover etc...

EIL- TYPE	STD. NO.	SPECIFICATIONS	Wt./Unit
TYPE-I - GRATINGS	7-68-0697- Rev 4	25x3@30c/c-6 sq. twisted @ 100 c/c, Frame bar-25x6	25.03 kg/m ²
TYPE-II - GRATINGS	7-68-0697- Rev 4	25x6@35c/c-8 sq. twisted @ 75 c/c, Frame bar-25x6	43.06 kg/m ²
STAIR TREADS	7-68-0697- Rev 4	25x6-8-35x75 ,65x6 Side plate, 5mm chq.	700x230=10kg/no 1000x230= 13.6 kg/no.
GRATING CLAMPS	7-68-0697- Rev 4	3mm Thk. Top , 6mm Thk Bottom & M6 Bolt	250 gm/no.
DRAINAGE COVER	7-65-0272- Rev.4	ISA 40X40X5 - 35X6@25 c/c-Open Frame	385x600= 30.94kg/no.
CATCH BASIN	7-65-0206- Rev.4	ISA 40X40X5 - 35X6@25 c/c-Square Frame	685x685= 37.9kg/no.



IRONWELD

Engineering Pvt. Ltd.

An ISO 9001 : 2015 Certified

CONTACT US



Office address:

33, Bhau Patil Road, I-10
Shantaniketan Complex, Bopodi,
Pune, Maharashtra, India - 411003



Contact Person:

Manjiri Surve (Marketing)
+91 8408981127

Sunil Hivarkar (Operation)
+91 9822603397



Contact No:

+91 8261977466



Factory Address:

Gat No.1263/5, Alandi-Markal Road,
Pimpalgaon Phata, Post Markal,
Tal-Khed Dist Pune- 412105



Email:

sales@ironweldengineering.com
ironweld20@gmail.com



Website:

ironweldengineering.com